



CONSTRUCTION INDUSTRY

PRODUCT GUIDE

VERTICAL ACCESS SOLUTIONS

Access anytime, anywhere

ALIMAK

CONSTRUCTION INDUSTRY

About Alimak

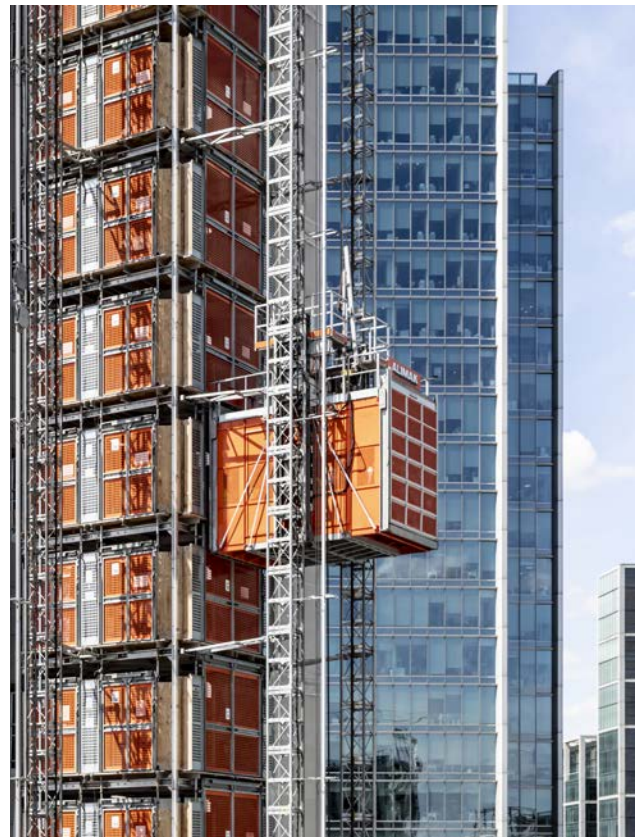
Alimak is a global leader and pioneer in the design and manufacture of vertical access solutions for industrial and construction industries. The company provides permanent and temporary high-quality elevators, construction hoists, mast climbing work platforms and transport platforms built on rack and pinion and traction technologies.

CONSTRUCTION VERTICAL ACCESS SOLUTIONS

For over 70 years, Alimak has pioneered the vertical access industry delivering far-reaching vertical access solutions to meet the needs of a variety of construction projects around the world. Alimak vertical access solutions have been utilised to build the world's tallest buildings, longest bridges and most recognisable landmarks.

Alimak construction hoists and transport platforms deliver efficient and reliable transportation for passengers and materials across the construction industry. Alimak mast climbing work platforms provide an efficient and safe work environment at height. The robust design of Alimak vertical access solutions enables greater productivity and uptime on construction sites, with vertical access equipment available to meet the needs of any project.

For more information visit alimak.com.



ALIMAK GROUP

Alimak Group is a world-leading provider of vertical access solutions for the industry and construction sectors. With a presence in more than 100 countries, Alimak Group develops, manufactures, sells and provides service to vertical access solutions with a focus on adding customer value through greater safety, higher productivity and improved cost-efficiency. Founded in Sweden 1948, Alimak Group has its headquarters in Stockholm, 12 manufacturing facilities in 8 countries and more than 2,400 employees around the world.



Construction hoists

Since the introduction of the world's first rack and pinion construction hoist more than 70 years ago, Alimak has continued to pioneer advances in vertical access solutions for construction sites around the world, across a range of applications including high-rise and low-rise construction, renovation and maintenance projects.



ALIMAK MAMMOTH

The award-winning Alimak Mammoth is the world's largest construction hoist. The large-scale hoist provides the ideal vertical access solution for efficiently transporting large prefabricated pods, external cladding panels and other bulky materials to the desired levels of a construction site to increase productivity. It is also ideal for the transportation of a large number of passengers during peak times and emergency evacuations.

TECHNICAL SPECIFICATIONS

Car size:	3.0–3.5 m x 4.6–5.0 m
Capacity:	5,500 kg
Speed:	30 m/min.



ALIMAK SCANDO 650 XL

The Alimak Scando 650 XL range of construction hoists provides the optimal solution for the vertical transportation of bulky materials. Featuring large payload capacities and large car sizes, the Alimak Scando 650 XL range drives productivity on construction sites. Utilising frequency control technology the Alimak Scando 650 XL can transport passengers and materials at speeds of up to 54 metres per minute to minimise interruptions to the flow of operations.

TECHNICAL SPECIFICATIONS

Car size:	2.0 m x 3.2–5.0 m
Capacity:	2,400–3,000 kg
Speed:	54 m/min.



ALIMAK SCANDO 650

Designed for optimal flexibility, the renowned Alimak Scando 650 range of construction hoists are available in a range of sizes and speeds to meet the needs of every construction project. Offering a vast range of loading capacities and configurations, the Scando 650 range of products is designed for the efficient transportation of passengers and materials for enhanced productivity on construction sites.

TECHNICAL SPECIFICATIONS

Car size:	1.5 m x 2.8–5.0 m
Capacity:	1,500–3,500 kg
Speed:	38–100 m/min.

PRODUCT RANGE



ALIMAK SCANDO 450

The Alimak Scando 450 range of construction hoists are designed for efficiency, safety and low energy consumption. Utilising a state-of-the-art, microprocessor-based control system, ALC II, the Alimak Scando 450 range solves a variety of on-site logistical problems including long wait times. Available in a variety of car lengths and payload capacities and single or dual car configurations, the Alimak Scando 450 range offers a truly flexible, economic version of the Scando range.

TECHNICAL SPECIFICATIONS

Car size: 1.4 m x 2.0–3.2 m

Capacity: 600–2,000 kg

Speed: 30–54 m/min.



ALIMAK SC

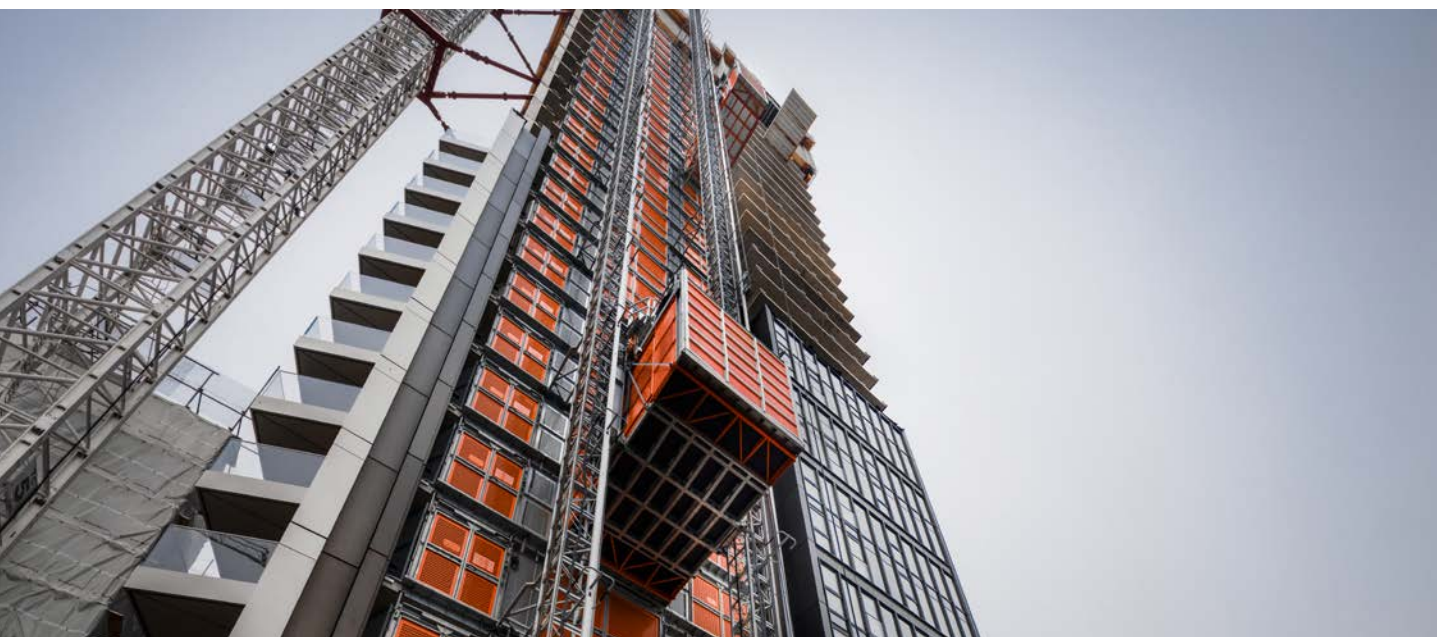
Based on proven rack and pinion technology, the Alimak SC range of construction hoists are adaptable to a diverse range of applications, providing a flexible option to enhance productivity on construction sites. The robust design of the Alimak SC range features durable materials and offers low energy consumption. Driven by a highly efficient helical gearbox, the Alimak SC range of construction hoists offers impressive hoist power and superior ride comfort.

TECHNICAL SPECIFICATIONS

Car size: 1.4 m x 3.0 m or
1.5 m x 3.2 m

Capacity: 2,000 kg

Speed: 36–90 m/min.



Mast climbing work platforms

Alimak's range of mast climbing work platforms are ideal for facade work when a project presents logistical challenges such as excessive heights. Efficient at even the lowest levels, mast climbing work platforms provide the ideal vertical access solution for facade work such as bricking, window installation, and coating.



ALIMAK MC 650

The Alimak MC 650 is Alimak's largest and most powerful mast climbing work platform. Engineered for efficiency, the MC 650 offers a high-quality vertical access solution for heavy applications with payload capacities of 2,230 kg – 7,240 kg and lengths of up to 41.8 metres depending on the application. The Alimak MC 650 mast climbing work platform utilises the same patented mast as Alimak's 650 construction hoists for additional flexibility.

TECHNICAL SPECIFICATIONS

Platform size:	1.5–2.7 m x 4.4–41.8 m
Capacity:	2,230–7,240 kg
Speed:	12 m/min.

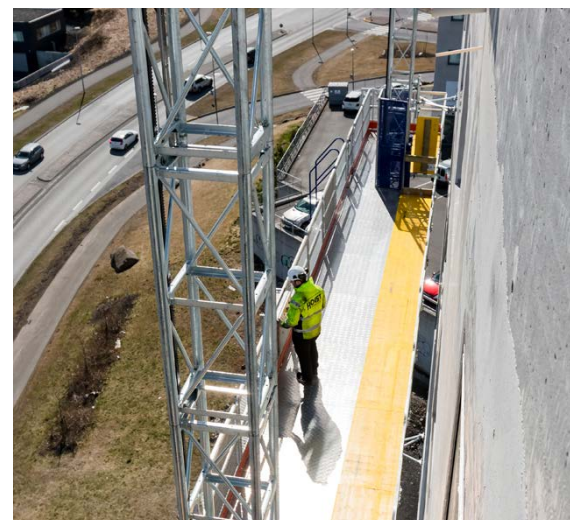


ALIMAK MC 450

The Alimak MC 450 is used to transport people, their tools and materials to the working area to work safely and ergonomically as the machine can move between any level of the structure. From ground to all levels, the Alimak MC 450 mast climbing work platform drives productivity, safety and economy on construction sites.

TECHNICAL SPECIFICATIONS

Platform size:	1.2–2.2 m x 4.2–30.2 m
Capacity:	1,500–4,500 kg
Speed:	8–9.6 m/min.



Transport platforms and material hoists

The range of transport platforms and material hoists available from Alimak improve the efficiency of transporting goods and materials on construction sites. Designed for a range of applications, Alimak transport platforms and material hoists offer additional functionality to drive productivity and enhance the safety of operations on-site.



ALIMAK TPM

The Alimak TPM is utilised on construction sites for the vertical transportation of large and bulky loads such as palettes, prefabricated loads and materials. Suitable for installation on the inside or outside of buildings, the TPM range offers true flexibility. The Alimak TPM range is designed to drive efficiency and productivity on construction sites.

TECHNICAL SPECIFICATIONS

Platform size:	1.6–4.8 m x 1.6–3.2 m
Capacity:	1,300–4,000 kg
Speed:	12–24 m/min.



ALIMAK TPL

Featuring a robust modular design, the Alimak TPL range transcends the capabilities of traditional material hoists offering additional functionality and high performance in restricted spaces. The Alimak TPL range can be utilised on smaller construction projects to transport loads of up to 2,000 kg rapidly to elevated points on-site for greater productivity.

TECHNICAL SPECIFICATIONS

Platform size:	1.0–3.2 m x 1.5–4.4 m
Capacity:	300–2,000 kg
Speed:	12–24 m/min.



Construction hoist and platform combinations

Alimak's range of construction products can be utilised together to drive further efficiencies and safety on site. Combining a construction hoist and a transport platform separates the moving stream of people and materials, increasing logistic efficiency. Moving materials requires load and unloading time resulting in longer wait times.

Due to the open cage of the transport platform, materials can easily be transported to move larger volumes which cannot pass the door of the construction hoist. At the same time, the hoist is then available for the rapid movement of people.

Construction hoists can share the same mast as the mast climbing work platforms and transport platforms. This unique advantage improves the utilization of accessories and increases the access capability in a cost-effective way.



Custom construction solutions

Alimak possess an extensive portfolio of customised vertical access solutions for an array of construction applications and environments. Alimak's modular range of construction hoists, transport platforms and mast climbing work platforms can be customized to suit a large range of applications.

The standard range of Alimak hoists and platforms offer the optimum transport solution for the majority of low rise, medium and high-rise constructions of all types. For specific demands, the modular range can be tailored to almost any height, size or payload and can be installed on inclined or curved structures.

The Alimak construction hoist system for example allows for single, dual or triplex hoist car

configurations with payload capacities of up to 12,400 kg and load space of more than 95 square metres.

Alimak has a long track record of successfully carrying out projects for construction companies and end users with special demands on products and production. An experienced team of Alimak project engineers can ensure projects requirements are fulfilled.





PARTS & ACCESSORIES

Parts

Alimak genuine spare parts for Alimak construction access equipment ensure systems will run at optimal performance and efficiency.

Years of uninterrupted service, with minimal breakdowns and safe operation are tangible benefits of using genuine Alimak parts, designed to keep equipment running at peak performance by reducing downtime and the costs of ownership.

It is critical to understand the lifecycle of parts manufactured for Alimak equipment and to keep routine preventive maintenance schedules to reduce breakdowns and minimise unit expenses.

That's why Alimak Service follows Alimak's manufacturer guidelines and recommendations in servicing equipment and use only genuine Alimak

parts as an integrated part of service programs for preventive maintenance and repairs.

From gearbox to motors and brake pads to safety devices, all local Alimak Service centres stock parts for Alimak, Champion and Hek products in use today. Alimak have invested in building a global replacement parts distribution network, that guarantees parts and components are delivered when needed.

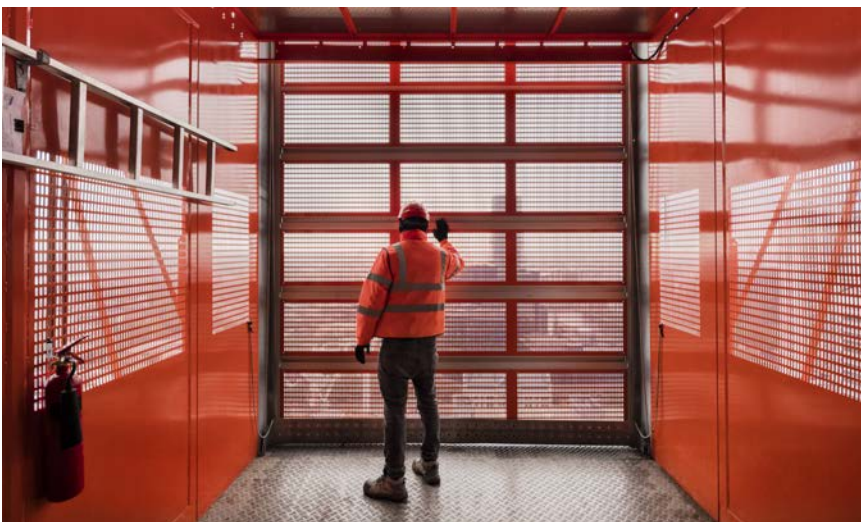
Alimak Service has spare parts in stock locally through Alimak's sales companies and a comprehensive spare parts stock at Alimak's warehouses across the world.

Accessories

A wide range of accessories such as masts, ties, cable guiding equipment and landing gates are available for Alimak construction hoists, transport platforms, material hoists and mast climbing work platforms.

Alimak offers three mast types of high quality, each to support the light, medium and heavy range of construction products. The majority of the accessories can be used collectively on hoists and platforms which fall into the same product category, resulting in cost benefits for fleet owners.

Alimak's flexible modular landing gate system suits all known brands of construction hoists, material hoists and transport platforms on the market.



CASE STUDY

Alimak construction hoists at work on Centre Point modernisation

Alimak construction hoists were utilised during the renovation of Centre Point, London, one of the tallest residential towers in the UK.

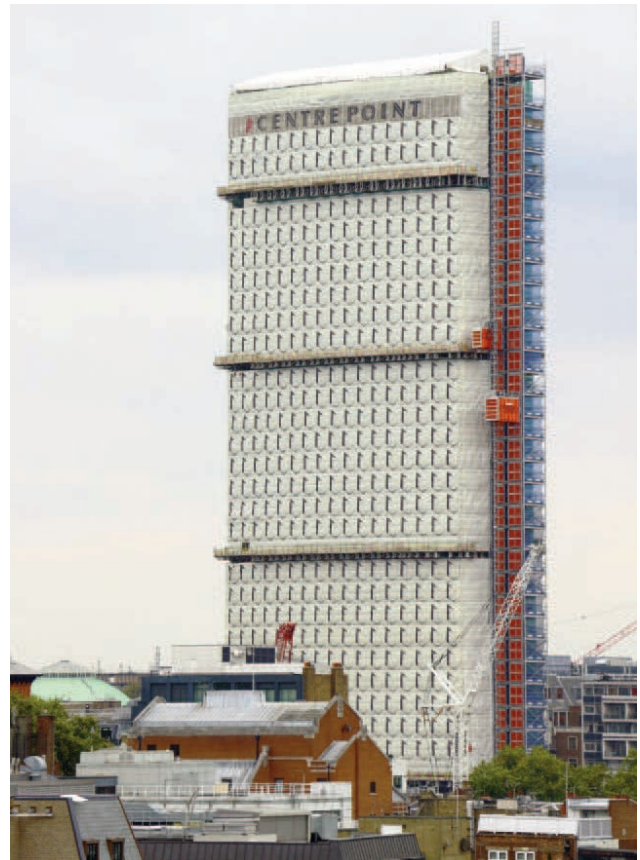
Brookfield Multiplex utilised two Alimak Scando 650 construction hoists alongside a common access tower during the renovation of Centre Point in London. Standing at 117 metres, the tower is one of the tallest residential developments in London and was transformed into 82 1-5 bedroom apartments with spa, gym and pool amenities. Located between Tottenham Court Road and Oxford Street, the project took place on one of London's busiest major intersections.

TWO CONSTRUCTION HOISTS ON A COMMON TOWER

The construction hoists were installed on a common tower comprised of aluminium alloy for minimal weight and with a 5x5 m footprint for optimal operation in restricted space. The tower was capable of operating both hoists at the same time to reduce waiting times for materials and workers and drive productivity. As a result of the common tower, the Alimak hoists were not tied to the building allowing for external cladding to be added to the building simultaneously except for the construction hoist landings. This meant that fewer panels required replacement as the project concluded.

CHALLENGES

One challenge encountered on the project was that Centre Point had received Grade II Listing which meant that the form of the original facade had to be preserved meaning that it was not feasible to tie the construction hoists to the facade of the building. The only openings available were on the south side of the building, these were windows with openings of 1.4 m – 1.7 m. Access to the building was achieved through the use of the construction hoists and the common tower. The location of Centre Point also presented limitations, meaning that the size and model of the construction hoists had to be chosen carefully. The models selected for the project were the Alimak Scando 650 XL and Alimak Scando 650 FC. All resulting challenges with application to the building were overcome by Alimak's engineers in the UK and Sweden.



Centre Point, London, United Kingdom

HOIST DETAILS

Location:	Centre Point, London, UK
Applications:	Skyscraper, residential
Hoist types:	1 x Alimak Scando 650 FC 30/50 II 1 x Alimak Scando 650 XL 25/50 II
Capacity:	3,000 kg and 2,500 kg
Hoist car sizes (W x L x H):	1.5 m x 5.0 m x 2.3 m 2.0 m x 5.0 m x 2.8 m
Speed:	54 m/min.
Lifting height:	117 m

CASE STUDY

Alimak mast climbing work platforms provide facade access at a sustainable construction project

Construction began on a residential development in Skellefteå, Northern Sweden featuring 200 apartments, green spaces, office areas and designated parking areas.

New residential areas were required as the population of the Swedish town grew. Construction of a new development commenced to build a complex featuring 100 new condominium apartments and 118 rental apartments.

Ramirent, a rental partner of Alimak, delivered a range of vertical access solutions from Alimak to drive efficient operations throughout the construction of the development. Two Alimak construction hoists have been utilised on the project alongside an Alimak mast climbing platform. Sustainability is a core value of the project, and Alimak's construction hoists and mast climbing platforms provided a low-consumption vertical access solution to reduce the amount of energy used throughout the construction phase.



Strömsör, Skellefteå, Sweden



An Alimak MC 650 mast climbing work platform has been utilised throughout the project for facade work such as facade cladding and bricklaying. As Alimak's most advanced heavy-duty mast climbing platform, the MC 650 features lengths of up to 19.4 m or 41.8 m respectively when used in single and twin mast configurations. The maximum lifting capacity is 3,630 kg on a single mast and 7,240 kg on the twin mast configuration. The platform allows for efficient facade operations even at low heights with a free-standing set up of 22 m outdoors and a mobile chassis. The Alimak 650 mast climbing platform can, therefore, be loaded at heights as low as 1.2 m. The high payload and flexibility of the mast climbing platform enables greater productivity on-site as well as savings on time-cost as workers can transport all of their required tools and materials for the day in one journey.

PLATFORM DETAILS

Location:	Skellefteå, Sweden
Platform type:	Alimak MC 650 mast climbing work platform
Capacity:	3,630 kg
Speed:	12 m/min.
Lifting height:	22 m



SERVICE AND SUPPORT

Service and support

Alimak offers a comprehensive range of service solutions specifically tailored to meet the needs of our customers operating in demanding environments.

FULL SERVICE SUPPORT SOLUTION

Through our service centres in over 100 countries, Alimak offers a comprehensive range of services designed to care for your products and the people who operate them over the total lifecycle of the equipment. Alimak is committed to Safety. To ensure the safety and compliance of your products, Alimak offers a wide

range of inspections and certifications to support our customers in demonstrating that their equipment is compliant to the regulatory framework in which they operate, and that their people are competent in its use. To learn more about the inspection and certification programmes currently offered in your region, please contact Alimak.



SERVICE SOLUTIONS

Comprehensive range of service contracts, maintenance programmes and repair solutions to ensure maximum uptime



TRAINING

Training to support the safe operation, maintenance and installation of equipment



GENUINE SPARE PARTS

Genuine spare parts prolong machine life and maximise performance



INSPECTIONS, SAFETY AND COMPLIANCE

Routine inspection programmes to ensure equipment is kept safe and compliant



REFURBISHMENT SOLUTIONS

Bring new life to an aging machine with a cost effective refurbishment or upgrade



ASSET MANAGEMENT

A range of support solutions to manage the total life-cycle of equipment



Alimak is a global market leader and pioneer in the design and manufacture of vertical access solutions for industrial and construction industries. The company provides high quality rack and pinion and traction elevators, construction hoists and work platforms. Alimak has a well-established global sales, service and distribution platform across more than 90 countries with strong market presence. The company has a large global installed base of over 23,000 units which provides unique know-how of all industrial application areas. Alimak was founded in 1948 and employs over 1,200 people across the world. Alimak is part of Alimak Group which is headquartered in Stockholm, Sweden.

www.alimak.com

ALIMAK

Pictures are illustrative only and do not necessarily show the configuration of products on the market at a given point in time. Products must be used in conformity with safe practice and applicable statutes, regulations, codes and ordinances. Specifications of products and equipment shown herein are subject to change without notice. Copyright © 2022 Alimak Group AB. All rights reserved. Alimak and Scando are registered trademarks of Alimak Group AB.