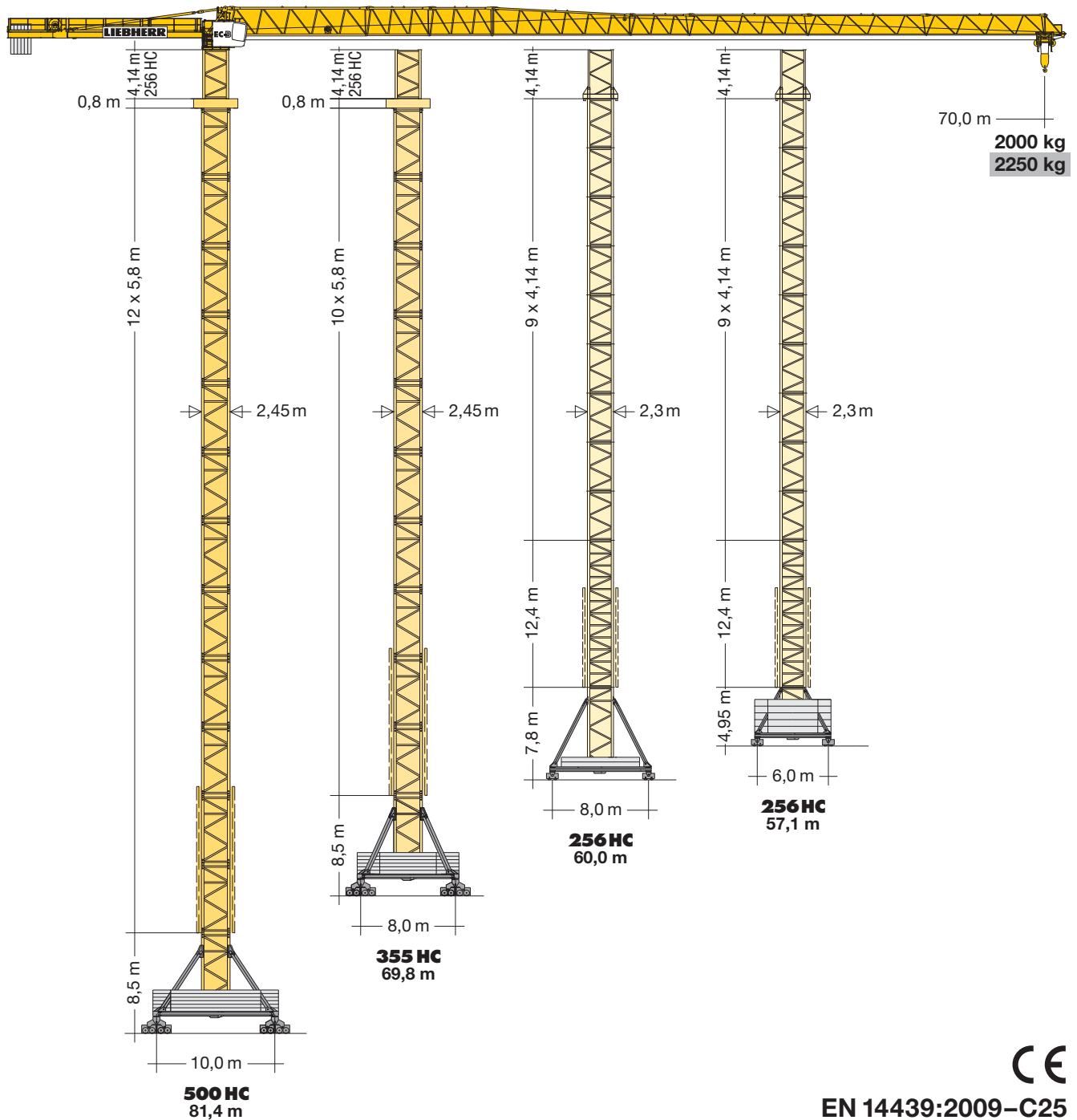


Turmdrehkran

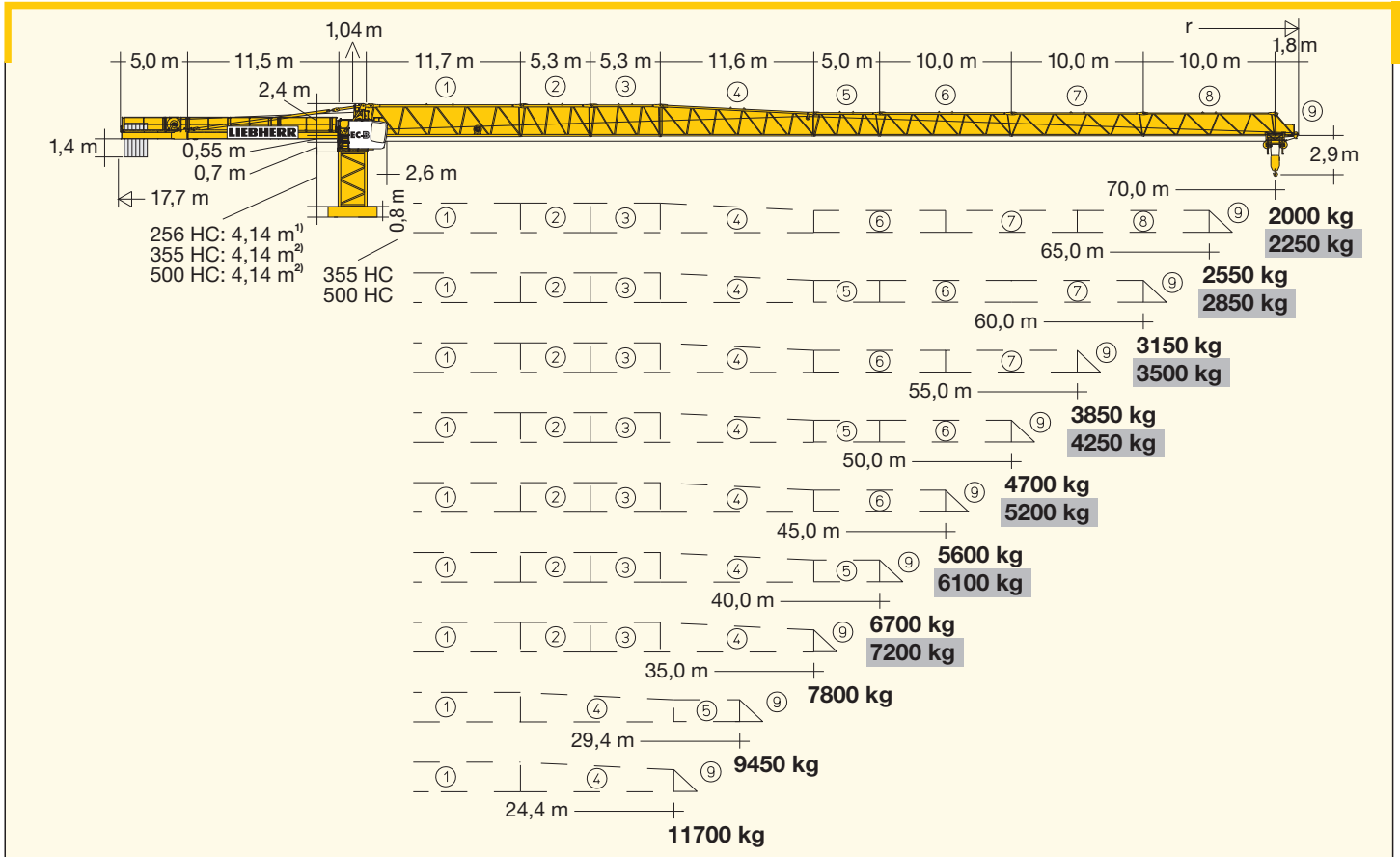
Tower Crane / Grue à tour / Gru a torre / Grúa torre
Guindaste de torre / Башенный поворотный кран

250 EC-B 12 Litronic®



EN 14439:2009-C25

LIEBHERR



¹⁾ **Turmstück oder Kletterturmstück.** / Tower section or climbing tower section. / Élément de mât ou élément de mât télescopable. / Elemento torre oppure elemento torre telescopabile. / Tramo torre o tramo torre trepable. / Segmento de torre ou segmento de torre para ascensão. / Башенная секция или секция наращивания.

²⁾ **Turmstück 256 HC.** / Tower section 256 HC. / Élément de mât 256 HC. / Elemento di torre 256 HC. / Tramo torre 256 HC. / Segmento de torre 256 HC. / Башенная секция 256 HC.

Hubhöhe

Hoisting height / Hauteur sous crochet / Altezza di sollevamento
 Altura bajo gancho / Altura de montagem / Высота подъема

C 25	256 HC			355 HC			500 HC	
	m	m	m	m	m	m	m	m
13	-	-	-	-	-	-	79,1*	-
12	-	-	-	-	-	-	73,3	81,4*
11	-	-	-	67,5*	-	-	67,5	75,6
10	-	-	-	61,7	73,3*	69,8*	61,7	69,8
9	52,4*	57,1*	60,0*	55,9	67,5	64,0	55,9	64,0
8	48,3	53,0	55,9	50,1	61,7	58,2	50,1	58,2
7	44,1	48,8	51,7	44,3	55,9	52,4	44,3	52,4
6	40,0	44,7	47,6	38,5	50,1	46,6	38,5	46,6
5	35,8	40,5	43,4	32,7	44,3	40,8	32,7	40,8
4	31,7	36,4	39,3	26,9	38,5	35,0	26,9	35,0
3	27,6	32,3	35,2	21,1	32,7	29,2	21,1	29,2
2	23,4	28,1	31,0	15,3	26,9	23,4	15,3	23,4
1	19,3	24,0	26,9	9,5	21,1	17,6	9,5	17,6
0	15,1	19,8	22,7	3,7	15,2	11,8	3,7	11,8

256 HC			355 HC			500 HC	
Diagram	Diagram	Diagram	Diagram	Diagram	Diagram	Diagram	Diagram
	$r = 12,5\text{ m}$	$r = 18,0\text{ m}$			$r = 18,0\text{ m}$		$r = 26,0\text{ m}$

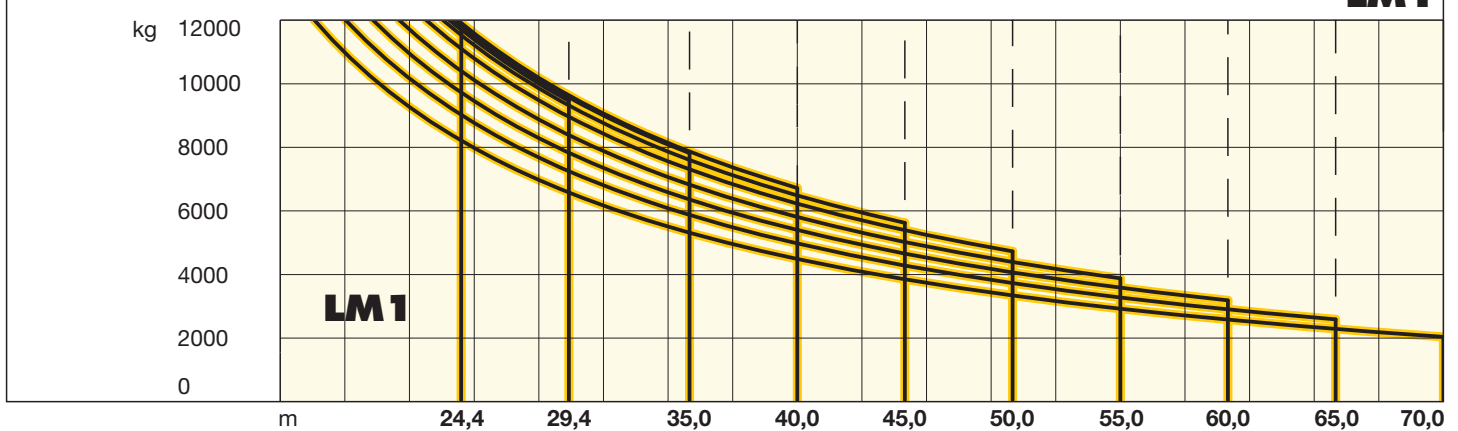
* **Weitere Hubhöhen, Auslegerlängen sowie Klettern im Gebäude auf Anfrage.** / Further hoist heights and jib lengths as well as climbing inside the building on request. / Autres hauteurs sous crochet et longueurs de flèche ainsi que hissage dans le bâtiment sur demande. / Ulteriori altezze gancho, lunghezze braccio così come telescopaggio all'interno dell'edificio: su richiesta. / Para alturas bajo gancho superiores, otros alcances y trepado en el interior del edificio, consultar. / Outras alturas de elevação, comprimentos de lança e subida no edifício: sob consulta. / Другие высоты подъема, длины стрелы и самоподъем в здании - по запросу.

Ausladung und Tragfähigkeit

Radius and capacity / Portée et charge / Sbraccio e portata
Alcances y cargas / Alcance e capacidade de carga / Вылет и грузоподъемность

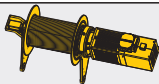
		250 EC-B 12												
m	r	m/kg	m/kg											
			19,0	22,0	25,0	30,0	35,0	40,0	45,0	50,0	55,0	60,0	65,0	70,0
70,0	(r=71,8)	2,6-17,6 12000	10970	9260	7970	6400	5290	4460	3820	3310	2890	2540	2250	2000
65,0	(r=66,8)	2,6-19,0 12000	12000	10160	8760	7060	5850	4950	4250	3700	3250	2870	2550	
60,0	(r=61,8)	2,6-20,3 12000	12000	10950	9440	7630	6340	5380	4630	4040	3550	3150		
55,0	(r=56,8)	2,6-21,5 12000	12000	11700	10110	8180	6810	5790	5000	4360	3850			
50,0	(r=51,8)	2,6-22,8 12000	12000	12000	10790	8740	7290	6210	5370	4700				
45,0	(r=46,8)	2,6-23,6 12000	12000	12000	11210	9090	7590	6470	5600					
40,0	(r=41,8)	2,6-24,2 12000	12000	12000	11590	9400	7850	6700						
35,0	(r=36,8)	2,6-24,1 12000	12000	12000	11510	9340	7800							
29,4	(r=31,2)	2,6-23,9 12000	12000	12000	11380	9450								
24,4	(r=26,2)	2,6-23,9 12000	12000	12000	11700									

LM 1



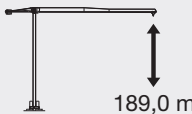
Antriebe Litronic®

Driving units / Mécanismes d'entraînement / Meccanismi / Mecanismos / Mecanismos / Приводы



↔ **stufenlos** / stepless / régl. continu
regl. progressiva / sin escalones / sem degraus
бесступенчатый kg m/min

45 kW FU
WIW 260 MZ 417

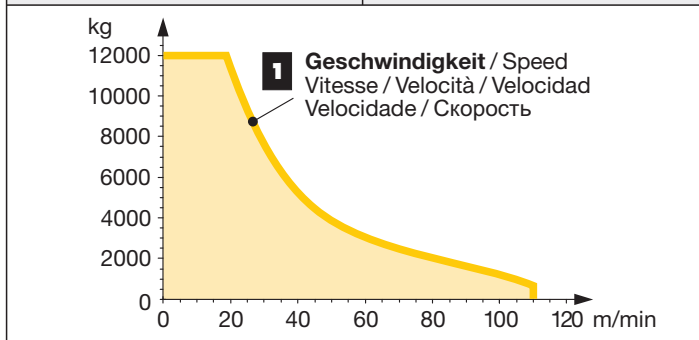


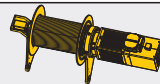
189,0 m

max. 325,0 m**

5 Lagen
Layers
Couches
Avvolgimenti
Camadas
Capas
Слоёв

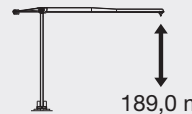
1	12000	0	↔	20
	650	0	↔	110





↔ **stufenlos** / stepless / régl. continu
regl. progressiva / sin escalones / sem degraus
бесступенчатый kg m/min

65 kW FU
WIW 280 MZ 415

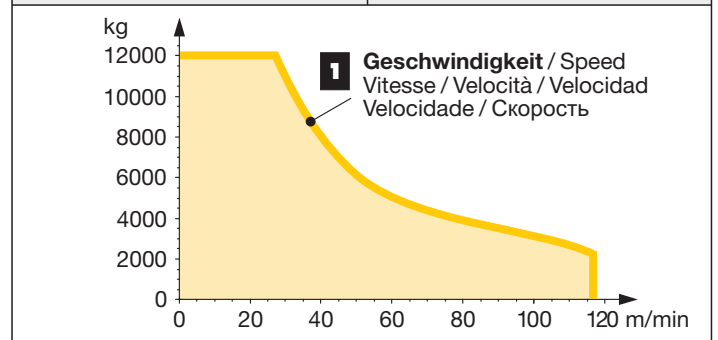


189,0 m

max. 325,0 m**

5 Lagen
Layers
Couches
Avvolgimenti
Camadas
Capas
Слоёв

1	12000	0	↔	28
	2200	0	↔	116



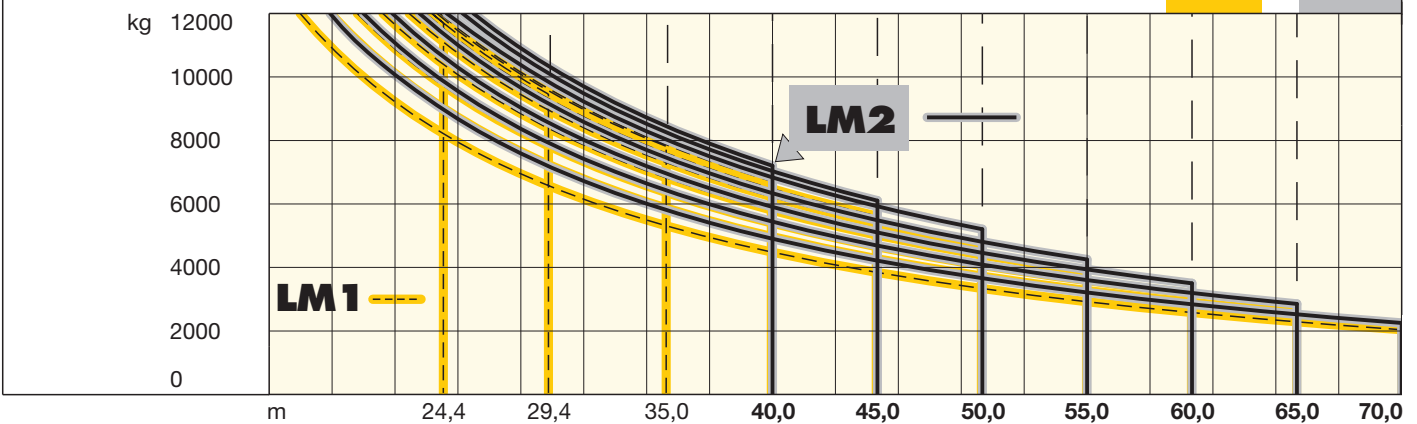
** Weitere Hublastdaten: siehe Betriebsanleitung. / Further hoist load data: see instruction manual. / Autres données de la charge de levage: voir manuel d'instruction. / Altri dati sui carichi sollevati: consultare il manuale d'istruzione. / Alturas bajo grancho superiores según manual. / Outras tabelas de carga: consultar manual de instruções. / Другие данные по весу поднимаемых грузов: см. инструкцию по эксплуатации.

Ausladung und Tragfähigkeit

Radius and capacity / Portée et charge / Sbraccio e portata
Alcances y cargas / Alcance e capacidade de carga / Вылет и грузоподъемность

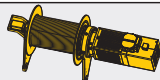
		250 EC-B 12 Litronic®												
		m/kg												
m	r	m/kg	19,0	22,0	25,0	30,0	35,0	40,0	45,0	50,0	55,0	60,0	65,0	70,0
70,0	(r=71,8)	2,6-18,9 12000	11920	10070	8680	6990	5790	4900	4210	3660	3210	2840	2520	2250
65,0	(r=66,8)	2,6-20,5 12000	12000	11070	9550	7710	6410	5440	4690	4090	3600	3190	2850	
60,0	(r=61,8)	2,6-21,9 12000	12000	11920	10300	8330	6940	5900	5100	4460	3940	3500		
55,0	(r=56,8)	2,6-23,2 12000	12000	12000	11000	8920	7440	6340	5490	4810	4250			
50,0	(r=51,8)	2,6-24,6 12000	12000	12000	11800	9580	8010	6830	5930	5200				
45,0	(r=46,8)	2,6-25,2 12000	12000	12000	12000	9850	8230	7030	6100					
40,0	(r=41,8)	2,6-25,7 12000	12000	12000	12000	10070	8430	7200						

LM1 + LM2

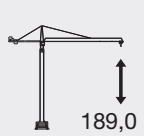


Antriebe FR.tronic®/Litronic®

Driving units / Mécanismes d'entraînement
Meccanismi / Mecanismos / Mecanismos / Приводы

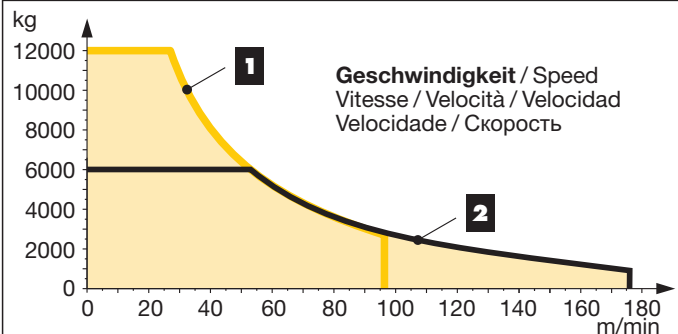
 ↔ **stufenlos** / stepless / régl. continu
regl. progressiva / sin escalones / sem degraus
бесступенчатый kg m/min

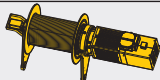
65 kW FU [SD.shift]
WIW 280 WZ 402 **5 Lagen**
Layers
Couches
Avvolgimenti
Camadas
Capas
Слоёв

 189,0 m

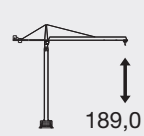
max. 325,0 m**

1	12000	0 ↔ 27
	2700	0 ↔ 96
2	6000	0 ↔ 53
	900	0 ↔ 176



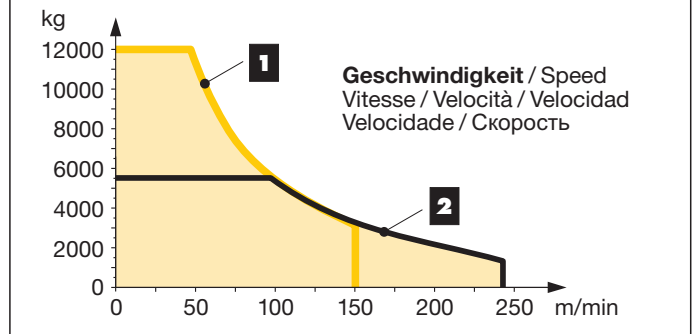
 ↔ **stufenlos** / stepless / régl. continu
regl. progressiva / sin escalones / sem degraus
бесступенчатый kg m/min

110 kW FU [SD.shift]
WIW 300 WZ 401 **5 Lagen**
Layers
Couches
Avvolgimenti
Camadas
Capas
Слоёв

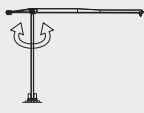
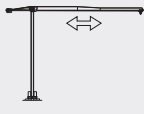
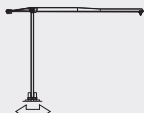
 189,0 m


max. 325,0 m**

1	12000	0 ↔ 49
	3100	0 ↔ 150
2	5500	0 ↔ 97
	1400	0 ↔ 243



LM 2 Abweichende Geschwindigkeiten und Betriebsbedingungen. / Variant speeds and service conditions. / Vitesses et conditions de fonctionnement différentes. / Differenti velocità e condizioni di funzionamento. / Otras velocidades y características de funcionamiento. / Outras velocidades e características de funcionamento. / Нестандартные скорости и условия эксплуатации.

	U/min 0 ↔ 0,8 sl./min tr./min	2 x 7,5 kW FU
	0 ↔ 120,0 m/min	7,5 kW FU
	25,0 m/min	4 x 7,5 kW (500 HC) 4 x 5,5 kW (355 HC) 2 x 7,5 kW (256 HC)

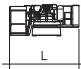
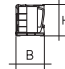
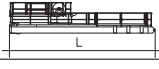
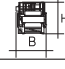
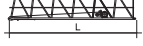
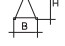
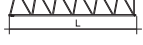
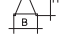
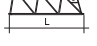
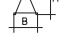
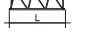
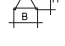
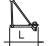


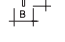
 kVA	45 kW FU	65 kW FU	110 kW FU
	63,0	86,0	122,0

kVA reduzierbar bei zu geringer Netz-Anschlussleistung, siehe BAL.
kVA can be reduced in case of too little power of the mains, see instruction manual. / kVA peut être réduit en cas de trop faible puissance du réseau, voir manuel d'instruction. / kVA riducibili in caso di potenza di rete ridotta (si veda manuale uso e manutenzione) / kVA variable para potencia de red demasiado pequeña, ver Manual de instrucciones. / kVA reduzível no caso de capacidade da rede elétrica muito baixa, ver manual de instruções. / Количество kVA может быть сокращено до минимальной общей потребляемой мощности, см. инструкцию по эксплуатации.

Kolli-Liste

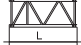
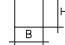

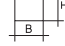
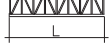
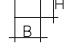


Packing List / Liste de colisage / Lista dei colli
Lista de contenido / Lista de embalagem / Упаковочный лист

Montagewichte: siehe Betriebsanleitung. / Erection weights: see instruction manual. / Poids de montage: voir manuel de service. / Pesì di montaggio: vedere manuale d'uso. / Peso para el montaje: según manual. / Pesos de montagem: veja-se as instruções p. uso. / Масса монтируемых частей: см. инструкцию по эксплуатации.

Kranoberteil		Upper part of crane / Partie supérieure de grue / Parte superiore della gru Parte superior grúa / Parte superior do guindaste / Верхняя часть крана	L (m)	B (m)	H (m)	kg*			
Pos. Anz. Item Qty. Rep Qty. Voce Qta. Pos. Cant. Ref. Cant. Поз. Кол-во	1	1	Drehbühne kpl. / Slewing platform cpl. Ensemble mât cabine cpl. / Piattaforma girevole compl. / Conjunto plataforma de giro / Plataforma giratória compl. Поворотная платформа в сборе			5,62	2,30	2,54	10400
2	1	Gegenausleger / Counter-jib / Contre-flèche Controffaccia / Contrapluma / Contra-lança Консоль противовеса			11,80	2,45	2,54	10300	
3	1	Ausleger-Anlenkstück / Jib heel section Pied de flèche / Sezione articolata braccio Pluma tramo primero / Base articulada de lança Корневая секция стрелы			11,98	1,41	2,56	① 4600	
4	1	Ausleger-Zwischenstück / Intermediate jib section Élément intermédiaire de flèche / Sezione intermedia braccio / Tramo intermedio pluma / Peça suplementar da lança / Промежуточная секция стрелы			5,60	1,35	2,49	② 1500 ③ 1340	
5	1	Ausleger-Zwischenstück / Intermediate jib section Élément intermédiaire de flèche / Sezione intermedia braccio / Tramo intermedio pluma / Peça suplementar da lança / Промежуточная секция стрелы			11,90	1,35	2,43	④ 2200	
6	1	Ausleger-Zwischenstück / Intermediate jib section Élément intermédiaire de flèche / Sezione intermedia braccio / Tramo intermedio pluma / Peça suplementar da lança / Промежуточная секция стрелы			5,24 10,24 10,24 10,24	1,35 1,35 1,86 1,86	1,84 1,86 1,86 1,86	⑤ 860 ⑥ 1370 ⑦ 1020 ⑧ 720	
7	1	Ausleger-Kopfstück / Jib head section / Pointe de flèche / Punta braccio / Tramo punta de pluma Cabeça de lança / Концевая секция стрелы			1,90	1,54	2,05	⑨ 250	
8	1	Laufkatze und Lashaken / Trolley and hook Chariot de distribution et crochet / Carrello con gancio / Carrito y gancho / Carro de ponte e gancho / Грузовая тележка и грузовой крюк			1,87	1,84	1,66	1060	

Turm

Tower / Mât / Torre
Torre / Torre / Башня

9	9	Turmstück / Tower section Elément de mât / Elemento di torre Tramo torre / Torre / Башенная секция			256 HC 4,14 355 HC 6,28 500 HC 6,28	2,30 2,45 2,45	2,30 2,45 2,45	2300 5050 6480
10	1	Turmstück lang / Long tower section Elément de mât long / Elemento di torre lungo / Tramo de torre largo / Peça de torre comprida / Башенная секция, длинная			256 HC 12,42	2,30	2,30	5770
11	1	Grundturmstück / Base tower section Mât de base / Elemento di torre base Tramo base / Peça de base de torre Секция основания			256 HC 8,85 (12,42)	2,30 (2,30)	2,30 (2,30)	4830 (7940)
12	1	Kletterturmstück / Climbing tower section Elément de hissage de mât / Elemento torre di telescopaggio / Tramo de trepado / Tramo de telescopagem / Секция самоподъема			256 HC 4,14	2,30	2,45	3300


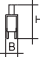

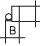
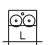
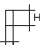
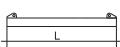
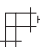
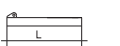


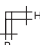
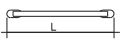
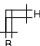
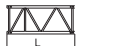
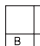
Pos. Anz.
Item Qty.
Rep. Qte.
Voce Qta.
Pos. Cant.
Ref. Cant.
Поз. Кол-во

L (m) B (m) H (m) kg*

Klettereinrichtung Climbing equipment / Equipement de télescopage / Attrezzatura per allungamento della gru Equipo de trepado / Acesoários p. subida no edificio / Обойма наращивания

13	1	Führungsstück kpl., geteilt / Guide section cpl., split / Cage télescopique cpl., dévisée / Gabbia di sopraelevazione compl., suddivisa / Torre de montaje completa, dividida / Peça de guia compl., subdividida / Направляющая секция в сб., разъемная	256 HC	8,39	2,68	2,58 (3,04)	5100
			355 HC	12,39	2,75	1,58	8300
			500 HC	12,39	2,75	1,58	8300
14	1	Hydraulikanlage, Stütz- und Klettertraverse / Hydraulic unit, supporting and climbing cross members / Système hydraul. avec traverses d'appui et de télescop. / Sist. idraul. traversa di appoggio e allugam. gru / Sistema hidráulico con traviesa de apoyo y trepado / Instalação hidráulica, travessa de apoio e subida / Гидроаппарат, стойка-упор и траверса обоймы наращивания	256 HC	2,10	1,25	1,00	1150
			355 HC	2,10	1,10	1,00	1810
			500 HC	2,10	1,10	1,00	1810

Unterwagen Undercarriage / Châssis / Carro Carro con mástil / Carro de guindaste / Опорная рама

15	4	Ausgleichsschwinge mit Schwingenlager Pivot for wheel box / Chape pour bogie Bilanciere di equilibratura con cuscinetto bilanciere / Balancin / Balancim com suporte Балансир с шарнирной опорой			355 HC				
			500 HC	1,60	0,72	1,48	1390		
16	2 4 4	Fahrschemel mit Antrieb / Rail bogie with drive Bogie moteur / Telaço con grúpa propulsore Caja rodillo motriz / Quadra sem grúpa de propulsão / Подрамник с приводом			256 HC	1,63 (1,46)	0,92 (0,84)	0,95 (0,87)	1690 (920)
			355 HC	1,40	0,75	0,65	920		
			500 HC	1,45	0,82	0,72	1690		
17	2 4 4	Fahrschemel ohne Antrieb / Rail bogie without drive / Bogie fou / Telaço sem grúpa propulsore Caja rodillo conducido / Quadra com grúpa de propulsão / Подрамник без привода			256 HC	1,37 (1,15)	0,62 (0,60)	0,95 (0,87)	1340 (880)
			355 HC	1,10	0,60	0,65	880		
			500 HC	1,30	0,40	0,72	1340		
18	1 2 2	Tragholm lang / Long support arm / Longeron long / Longherone lungo / Brazo soporte largo Travessa comprida / Несущая балка, длинная			256 HC	9,10 (11,85)	0,80 (0,82)	0,80 (0,80)	1650 (2200)
			355 HC	11,82	0,92	0,93	3515		
			500 HC	7,32	0,92	0,93	2330		
19	2	Tragholm kurz / Short support arm / Longeron court / Longherone corto / Brazo soporte corto Travessa curta / Несущая балка, короткая			256 HC	4,45 (5,58)	0,77 (0,65)	0,77 (0,77)	800 (1035)
			355 HC	5,74	0,80	0,90	1600		
			500 HC	7,14	0,80	0,90	2135		
20	2 + 2	Randträger / Border support / Traverse Supporti base Traviesa / Apoio de bordo / Стяжная балка			256 HC	5,46 – 5,40 (7,52 – 7,46)	0,11 – 0,18 (0,10 – 0,17)	0,16 – 0,38 (0,10 – 0,38)	175 – 525 (366 – 912)
			355 HC	7,30	0,14	0,14	340		
			500 HC	9,30	0,14	0,14	510		
21	4	Stützholm / Support strut / Hauban de châssis Correnti di appoggio / Tirante vertical Travessa de apoio / Опорный подкос			256 HC	4,14 (6,55)	0,18 (0,22)	0,25 (0,25)	320 (600)
			355 HC	6,06	0,26	0,34	862		
			500 HC	6,98	0,26	0,34	1140		
22	1	Unterwagen-Turmstück / Undercarriage tower section / Mât de châssis / Elemento di torre del carro / Tramo de carro / Peça de torre do chassis Опорная башенная секция			256 HC	3,73 (6,70)	2,62 (2,53)	2,62 (2,53)	2550 (3800)
			355 HC	6,61	2,44	2,44	7475		
			500 HC	6,61	2,44	2,44	7930		
23		Kleinteile, Seile und Abspannungen / Small parts, ropes and holding bars Acessorios, cables e tirantes / Accessori, funi e attrezzi di ancoraggio Despieces, cables y tirantes / Acesoários, cabos e peças de ancoragem Мелкие детали, Канаты и Пристежки			256 HC				
			355 HC	9,00	1,60	1,00	4000		
			500 HC						

() **Angaben in Klammern gelten für 8 m-Unterwagen.** / The data in brackets are valid for an undercarriage of 8 m. / Les données techniques indiquées entre parenthèses sont valables pour un châssis de 8 m. / Caratteristiche in (..) valgono per carro di 8 m. / Los datos entre paréntesis son válidos para carro de 8 m. Características em (..) válidas pelo chassis de 8 m. / Данные в скобках относятся к 8-метровой опорной раме.

* **Einzelgewichte.** / Single weights. / Poids individuels. / Singoli pesi. / Pesos unitarios. / Pesos de peças componentes. / Индивидуальный вес.

Konstruktionsänderungen vorbehalten! / Subject to alterations! / Sous réserves de modifications! / Riservato il diritto di modifiche strutturali!
¡Sujeto a modificaciones! / Salvo modificação da construçao! / Права на внесение конструкторских изменений сохраняются!

Sämtliche Angaben erfolgen ohne Gewähr. / This information is supplied without liability. / Ces renseignements sont sans garantie. / Tutte le indicazioni fornite senza garanzia. / Declinamos toda responsabilidad derivada de la información proporcionada. / Declinamos qualquer responsabilidade quanto à informação fornecida. / Все данные указаны без обязательств.

121 P – 5851 • EN 14439:2009 – EN 13001-HC1/S2 • BGL C.0.10.0250 • 09.14 / 7

Printed in Germany.

Liebherr-Werk Biberach GmbH
Postfach 1663, D-88396 Biberach an der Riss
☎ +49 73 51 41-0, Fax: +49 73 51 41 22 25
www.liebherr.com, E-Mail: info.lbc@liebherr.com

Liebherr Industrias Metálicas, S.A.
Polígono Industrial Agustinos, Apartado 4096, E-31014 Pamplona
☎ +34-948-29 70 00, Fax +34-948-29 70 29
www.liebherr.com, E-Mail: info.liim@liebherr.com

250 EC-B 12 Litronic® 6