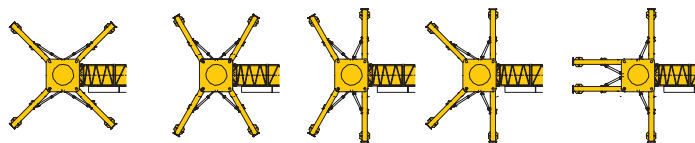
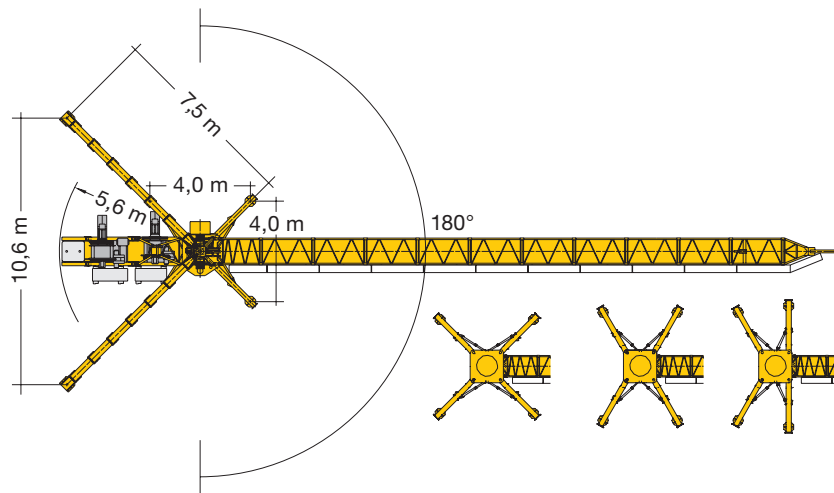
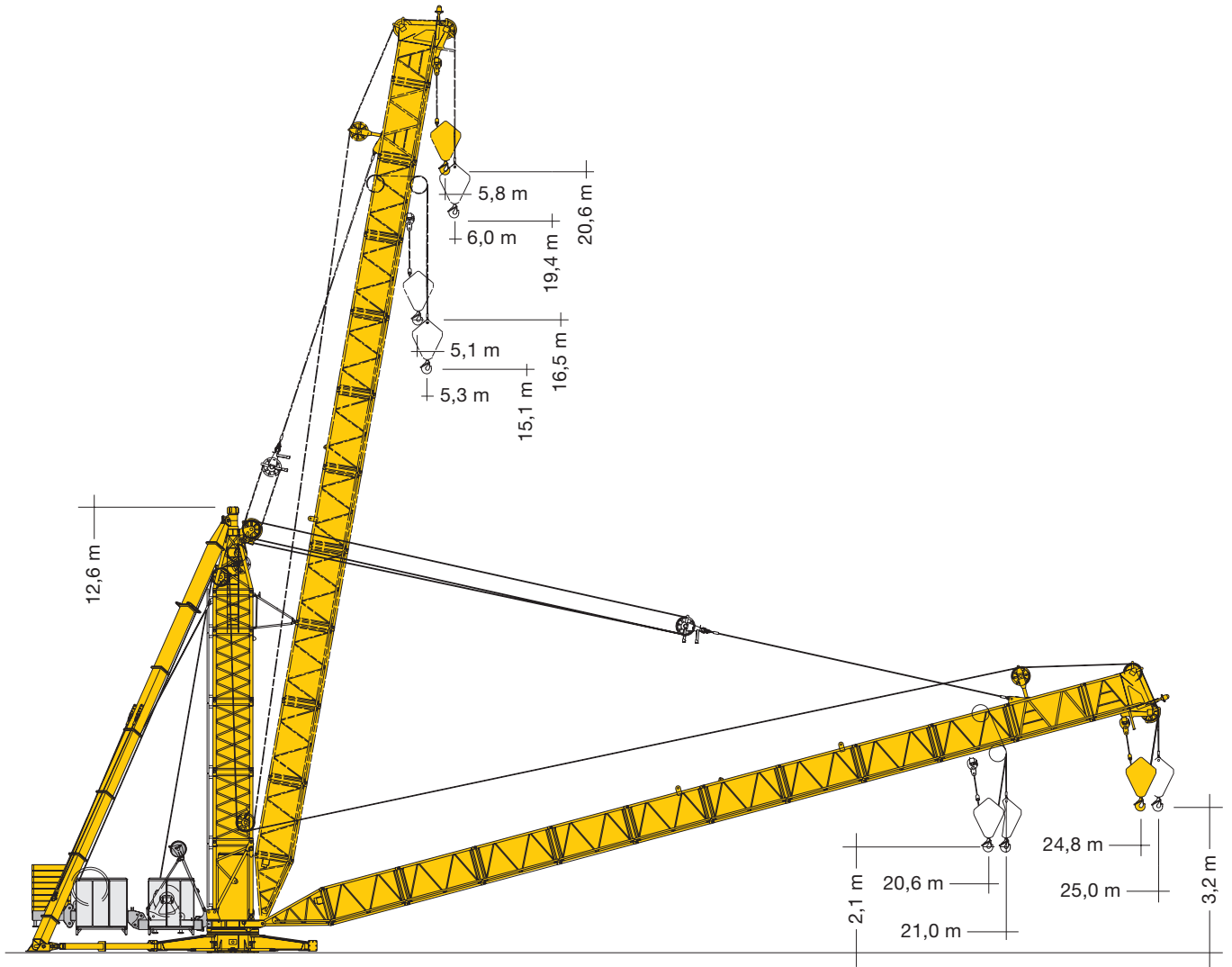


Derrick 200 DR 5/10 Litronic®

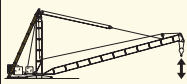

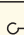
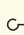
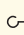


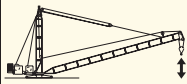

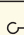
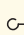
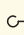
CE
EN 14439:2009

LIEBHERR

Ausladung und Tragfähigkeit

Radius and capacity / Portée et charge / Sbraccio e portata
Alcances y cargas / Alcance e capacidade de carga / Вылет и грузоподъемность

|  ↓ 317,0 m* | | mit Stiff-Legs / with 'stiff legs' / avec «stiff-legs» / con Stiff-Legs con stiff-legs / com tirante rígido / с выносными опорами | | | | | | | | | | | | | |
|------------------------------------------------------------------------------------------------|------------------------------------------------------------------------------------------------------------|--------------------------------------------------------------------------------------------------------------------------------------|-------|-------|-------|-------|-------|-------|-------|-------|------------------------|------|------|-----------------------|--|
| m | m/kg | 11,0 | 12,0 | 13,0 | 14,0 | 15,0 | 16,0 | 17,0 | 18,0 | 19,0 | 21,0 | 22,0 | 23,0 | 25,0 | |
| 25,0 |  6,0–25,0 5000 | 5000 | 5000 | 5000 | 5000 | 5000 | 5000 | 5000 | 5000 | 5000 | 5000 | 5000 | 5000 | 5000 | |
| 25,0 |  5,8–19,0 10000 | 10000 | 10000 | 10000 | 10000 | 10000 | 10000 | 10000 | 10000 | 10000 | 8980 | 8550 | 8150 | 24,8 m 7500 | |
| 21,0 |  5,3–21,0 5000 | 5000 | 5000 | 5000 | 5000 | 5000 | 5000 | 5000 | 5000 | 5000 | 5000 | | | | |
| 21,0 |  5,1–20,6 10000 | 10000 | 10000 | 10000 | 10000 | 10000 | 10000 | 10000 | 10000 | 10000 | 20,6 m 10000 | | | | |

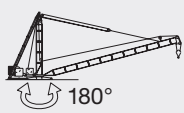
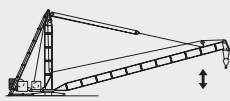
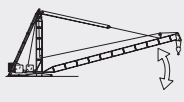
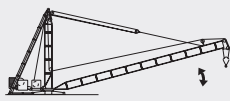
|  ↓ 317,0 m* | | ohne Stiff-Legs / without 'stiff legs' / sans «stiff-legs» / senza Stiff-Legs sin stiff-legs / sem tirante rígido / без выносных опор | | | | | | | | | | | | | |
|------------------------------------------------------------------------------------------------|------------------------------------------------------------------------------------------------------------|------------------------------------------------------------------------------------------------------------------------------------------|------|------|------|------|------|------|------|------|-----------------------|------|------|-----------------------|--|
| m | m/kg | 11,0 | 12,0 | 13,0 | 14,0 | 15,0 | 16,0 | 17,0 | 18,0 | 19,0 | 21,0 | 22,0 | 23,0 | 25,0 | |
| 25,0 |  6,0–20,0 5000 | 5000 | 5000 | 5000 | 5000 | 5000 | 5000 | 5000 | 5000 | 5000 | 4700 | 4480 | 4250 | 3800 | |
| 25,0 |  5,8–10,9 10000 | 9890 | 8830 | 7960 | 7220 | 6600 | 6060 | 5590 | 5180 | 4810 | 4190 | 3920 | | 24,8 m 3300 | |
| 21,0 |  5,3–21,0 5000 | 5000 | 5000 | 5000 | 5000 | 5000 | 5000 | 5000 | 5000 | 5000 | 5000 | | | | |
| 21,0 |  5,1–11,1 10000 | 10000 | 9050 | 8190 | 7450 | 6820 | 6280 | 5810 | 5390 | 5020 | 20,6 m 4500 | | | | |

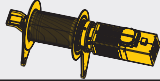
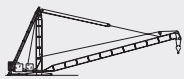
Zug-/Druckkräfte an den Verankerungspunkten auf Anfrage. / Tension/compression forces at anchoring points on request. / Forces de traction/compression aux points d'ancrage sur demande. / Sforzi di trazione e pressione sui punti di ancoraggio, su richiesta. / Fuerzas de tracción y compresión sobre los puntos de anclaje, consulta previa. / Forças de tração e compressão nos pontos de ancoragem, mediante consulta. / Усилия растяжения/сжатия в точках крепления - по запросу.

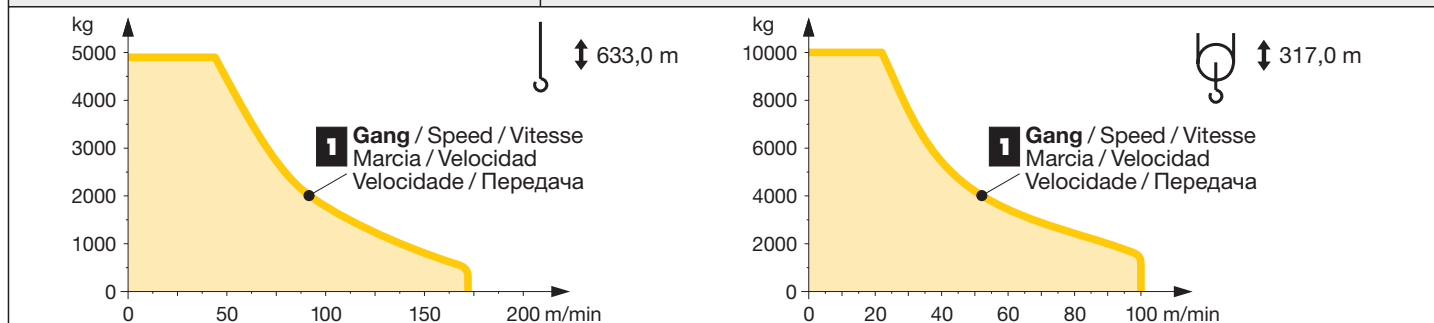
***Tragfähigkeit für höhere Hubhöhen auf Anfrage.** / Lifting capacity for higher hoisting heights on request. / Capacité de levage pour des hauteurs de levage plus hautes sur demande. / Portata per elevate altezze gancio su richiesta. / Consultar cargas máximas para alturas bajo gancho superiores. / Capacidade de carga para maiores alturas sob consulta. / Грузоподъемность для большой высоты подъема по запросу.

Antriebe

Driving units / Mécanismes d'entraînement / Meccanismi / Mecanismos / Mecanismos / Приводы

| | | | | |
|------------------------------------------------------------------------------------------------|-------------------------------------|---------------|---------------------------------------------------------------------------------------------------|---------------------------------------------------------------------------------------------------|
|  180° | U/min 0 ↔ 0,8 sl./min tr./min | 1 x 5,0 kW FU |  45 kW FU | |
|  1,3 min. | | 37 kW FU | |  37 kW FU |
| | | kVA | | 72,0 |

|  max. 633 m | ↔ stufenlos / stepless / régl. continu / regl. progressiva / sin escalones sem degraus / Бесступенчатый | | | |
|----------------------------------------------------------------------------------------------------------------------------------------------------------------------------------------------|------------------------------------------------------------------------------------------------------------|---------|----------------|---------|
| | kg | m/min | kg | m/min |
| 45 kW FU WIW 260 MZ 407  10 Lagen Layers / Couches Strati / Camadas Capas / Слоев | 1 4900 | 0 ↔ 44 | 1 10000 | 0 ↔ 22 |
| | 200 | 0 ↔ 172 | 1000 | 0 ↔ 100 |



Konstruktionsänderungen vorbehalten! / Subject to alterations!
Sous réserves de modifications! / Si fa riserva di modifiche!
¡Sujeto a modificaciones! / Salvo modificação da construo!
Права на внесение конструкторских изменений сохраняются!

Sämtliche Angaben erfolgen ohne Gewähr. / This information is supplied without liability. / Ces renseignements sont sans garantie. / Le indicazioni contenute si intendono salvo errori ed omissioni. Declinamos toda responsabilidad derivada de la información proporcionada. / Declinamos qualquer responsabilidade quanto à informação fornecida. / Все данные указаны без обязательств.

110 P – 5912 • EN14439:2009 – DIN 15018 – H1/B3 • BGL C.1.31.1020 • 04.10 / 7

Printed in Germany.