

3 Technical Data

This chapter will provide you with all data pertaining to the crane and its components. The data for lifting capacity indicates the load limitations which are not to be exceeded under any circumstances. All dimensions of the assembly units can be obtained in the section 'Assembly weights' as well as the hook heights required for the auxiliary crane.

3.1 Overall equipment

3.1.1 Lifting capacity



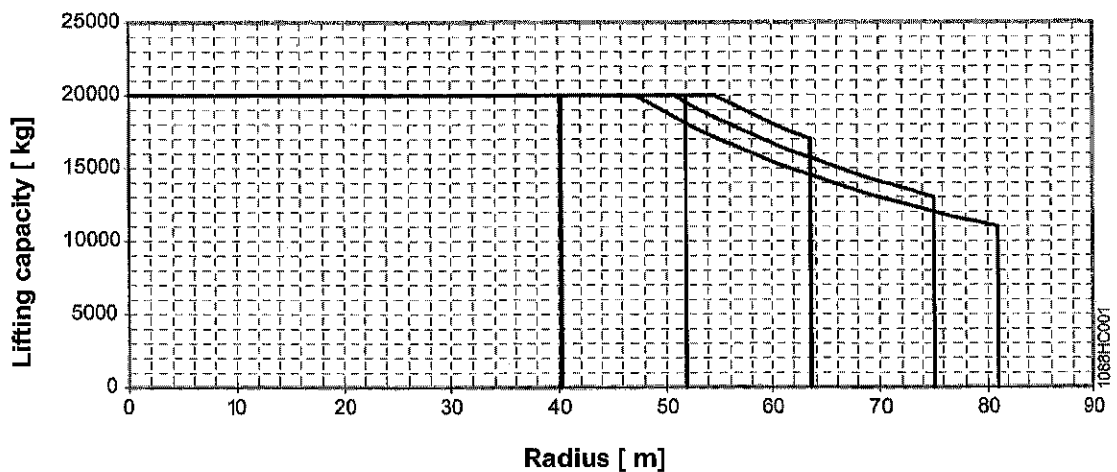
WARNING

Risk of accident if the lifting capacity is exceeded!

The specified lifting capacity only applies for standard configuration of the free-standing crane (standard hoisting heights and standard jib lengths). In case of greater special hoisting heights, the lifting capacity is reduced.

► In case of greater special hoisting heights, refer to the additional rope weight.

1088 HC 40: Load diagram (2-fall operation)



Tab. 23: Lifting capacity 1088 HC 40: Load diagram (2-fall operation)

Jib:	82.1 m (81.0 m)	76.3 m (75.2 m)	64.7 m (63.5 m)	53.1 m (51.9 m)	41.5 m (40.2 m)
Radius [m]	Maximum lifting capacity [kg]				
81.00	11000				

LBC//2012-10-11/en

Overall equipment

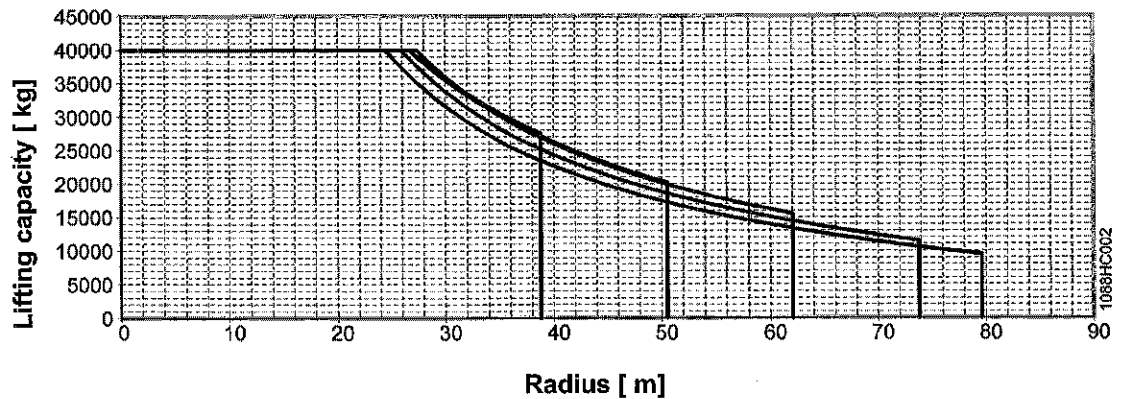
Jib:	82.1 m (81.0 m)	76.3 m (75.2 m)	64.7 m (63.5 m)	53.1 m (51.9 m)	41.5 m (40.2 m)
Radius [m]	Maximum lifting capacity [kg]				
80.00	11161				
79.00	11326				
78.00	11495				
77.00	11668				
76.00	11846				
75.20	11992	13000			
75.00	12028	13039			
74.00	12216	13240			
73.00	12408	13445			
72.00	12605	13657			
71.00	12807	13874			
70.00	13016	14096			
69.00	13230	14326			
68.00	13450	14561			
67.00	13676	14804			
66.00	13909	15053			
65.00	14149	15310			
64.00	14397	15575			
63.50	14523	15710	17000		
63.00	14651	15848	17147		
62.00	14914	16129	17449		
61.00	15185	16419	17760		
60.00	15465	16719	18081		
59.00	15753	17028	18412		
58.00	16052	17347	18754		
57.00	16360	17677	19108		
56.00	16679	18019	19474		
55.00	17009	18372	19853		
54.00	17351	18738	20000		
53.00	17705	19117	20000		
52.00	18072	19510	20000		
51.90	18109	19550	20000	20000	
51.00	18453	19918	20000	20000	
50.00	18848	20000	20000	20000	
49.00	19259	20000	20000	20000	
48.00	19686	20000	20000	20000	

LBC//2012-10-11/en

Jib:	82.1 m (81.0 m)	76.3 m (75.2 m)	64.7 m (63.5 m)	53.1 m (51.9 m)	41.5 m (40.2 m)
Radius [m]	Maximum lifting capacity [kg]				
47.00	20000	20000	20000	20000	
46.00	20000	20000	20000	20000	
45.00	20000	20000	20000	20000	
44.00	20000	20000	20000	20000	
43.00	20000	20000	20000	20000	
42.00	20000	20000	20000	20000	
41.00	20000	20000	20000	20000	
40.20	20000	20000 m	20000	20000	20000
40.00	20000	20000	20000	20000	20000
39.00	20000	20000	20000	20000	20000
Break point:	47.29 m	50.80 m	54.62 m	51.90 m	40.20 m

Tab. 24: Lifting capacity 1088 HC 40: Load chart (2-fall operation)

1088 HC 40: Load diagram (4-fall operation)



Tab. 25: Lifting capacity 1088 HC 40: Load diagram (4-fall operation)

Jib:	82.1 m (79.6 m)	76.3 m (73.8 m)	64.7 m (62.1 m)	53.1 m (50.5 m)	41.5 m (38.8 m)
Radius [m]	Maximum lifting capacity [kg]				
79.60	9500				
79.00	9604				
78.00	9780				
77.00	9961				
76.00	10147				
75.00	10337				
74.00	10533				

LBC//2012-10-11/en

Overall equipment

Jib:	82.1 m (79.6 m)	76.3 m (73.8 m)	64.7 m (62.1 m)	53.1 m (50.5 m)	41.5 m (38.8 m)
Radius [m]	Maximum lifting capacity [kg]				
73.80	10572	11500			
73.00	10733	11671			
72.00	10939	11889			
71.00	11150	12114			
70.00	11368	12344			
69.00	11591	12581			
68.00	11821	12825			
67.00	12057	13076			
66.00	12301	13334			
65.00	12551	13600			
64.00	12809	13874			
63.00	13075	14156			
62.10	13322	14418	15500		
62.00	13350	14447	15531		
61.00	13633	14748	15848		
60.00	13924	15057	16176		
59.00	14226	15377	16514		
58.00	14537	15708	16863		
57.00	14859	16049	17224		
56.00	15192	16403	17598		
55.00	15537	16768	17984		
54.00	15894	17147	18384		
53.00	16263	17539	18799		
52.00	16646	17946	19229		
51.00	17044	18368	19675		
50.50	17248	18585	19904	20200	
50.00	17457	18806	20138	20433	
49.00	17885	19261	20619	20911	
48.00	18331	19734	21119	21409	
47.00	18795	20226	21639	21926	
46.00	19278	20739	22180	22464	
45.00	19781	21273	22745	23025	
44.00	20306	21830	23334	23609	
43.00	20855	22412	23949	24218	
42.00	21427	23019	24591	24855	
41.00	22027	23655	25263	25520	

LBCI/2012-10-11/en

Jib:	82.1 m (79.6 m)	76.3 m (73.8 m)	64.7 m (62.1 m)	53.1 m (50.5 m)	41.5 m (38.8 m)
Radius [m]	Maximum lifting capacity [kg]				
40.00	22654	24321	25967	26215	
39.00	23312	25019	26705	26944	
38.80	23447	25163	26857	27094	27500
38.00	24002	25752	27479	27708	28108
37.00	24728	26522	28293	28510	28901
36.00	25505	27347	29165	29353	29733
35.00	26377	28272	30143	30240	30608
34.00	27300	29252	31178	31175	31528
33.00	28281	30292	32278	32161	32498
32.00	29323	31398	33447	33203	33522
31.00	30434	32577	34693	34305	34603
30.00	31620	33835	36023	35474	35748
29.00	32889	35182	37446	36716	36962
28.00	34250	36626	38973	38037	38251
27.00	35714	38180	40000	39445	39622
26.00	37292	39855	40000	40000	40000
25.00	38999	40000	40000	40000	40000
24.00	40000	40000	40000	40000	40000
23.00	40000	40000	40000	40000	40000
Break point:	24.45 m	25.92 m	27.37 m	26.62 m	26.74 m

Tab. 26: Lifting capacity 1088 HC 40: Load chart (4-fall operation)

3.1.2 Rope weights



WARNING

The specified lifting capacity only applies for standard assembly of the free-standing crane (standard hoist heights and standard jib lengths)!

The lifting capacity is reduced for greater special hoist heights.

► For greater special hoist heights, refer to the additional rope weight.

Rope diameter [mm]	Rope weight [kg/m]		
	Rope designation		
	PC-EUROLIFT	PDD 915 CZ	PDD 1315 C
10	0.51	-	0.47
11	0.61	-	0.59
12	0.73	-	0.69
13	0.86	-	0.80

LBC//2012-10-11/en

Overall equipment

Rope diameter [mm]	Rope weight [kg/m]		
	Rope designation		
	PC-EUROLIFT	PDD 915 GZ	PDD 1315 C
14	0.99	-	0.93
15	1.14	-	1.06
16	1.29	1.19	1.20
17	1.46	1.35	1.36
18	1.64	1.51	1.52
19	1.82	1.68	1.70
20	2.03	1.86	1.89
21	2.23	2.05	2.08
22	2.44	2.25	2.28
23	2.67	2.46	2.49
24	2.93	2.68	2.70
25	3.16	2.91	2.94
26	3.41	3.15	3.17
27	3.69	3.39	3.44
28	3.97	3.65	3.69
29	4.24	3.91	3.96
30	4.55	4.19	4.26
31	-	4.47	4.53
32	5.17	4.77	4.84
33	-	5.07	5.12
34	5.86	-	5.44
35	-	-	5.74
36	6.53	-	-
38	7.30	-	-
40	8.07	-	-

Tab. 27: Rope weight

LBC//2012-10-11/en